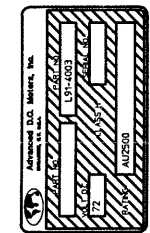
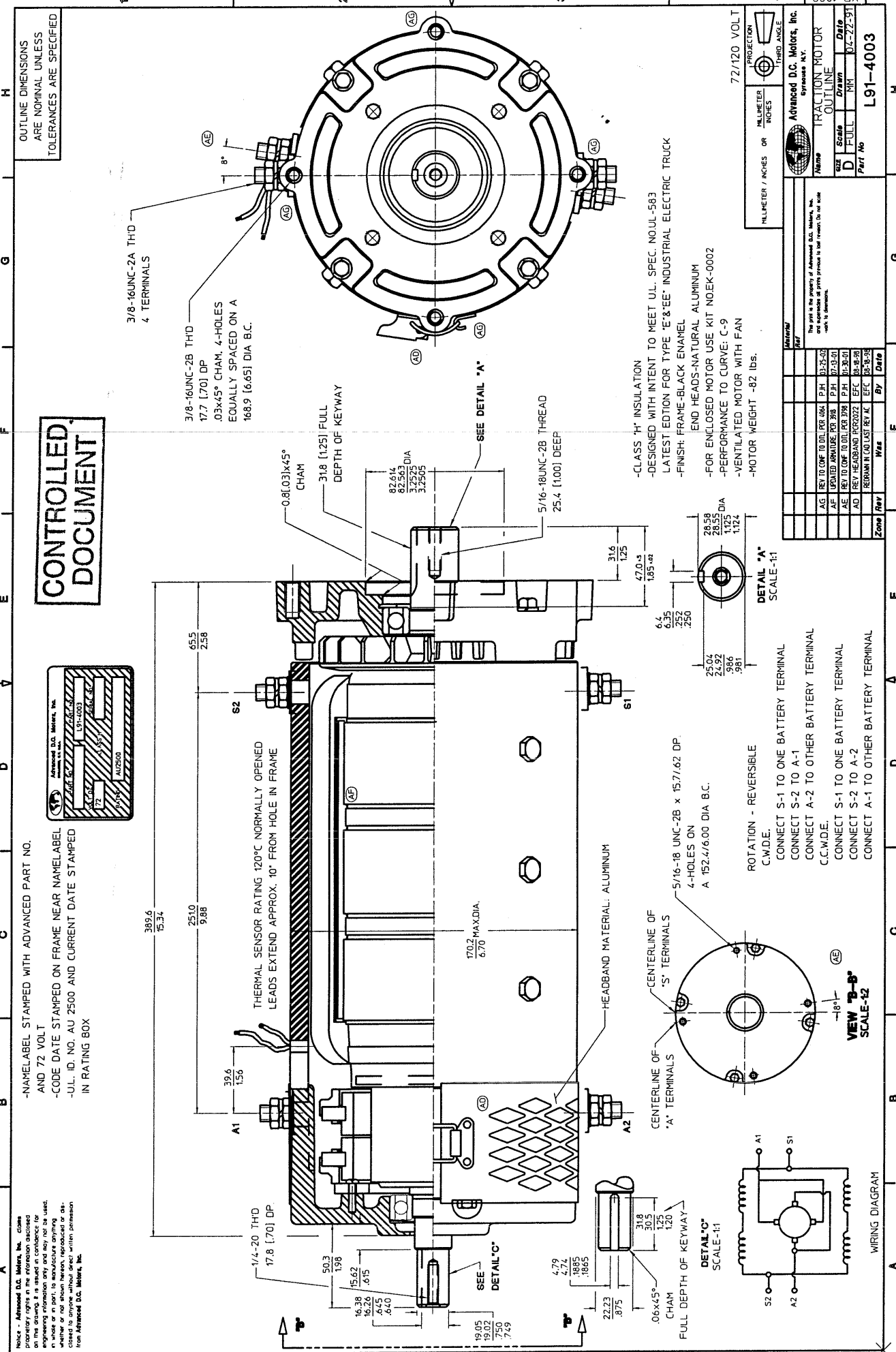


Notes: Advanced D.C. Motors, Inc. claims priority in this design. It is issued as a convenience for engineering information only and may not be used in whole or in part, to manufacture anything, or to sell such things, reproduces or otherwise, without written permission from Advanced D.C. Motors, Inc.

-NAME LABEL STAMPED WITH ADVANCED PART NO. AND 72 VOLT
 -CODE DATE STAMPED ON FRAME NEAR NAME LABEL
 -JUL. ID. NO. AU 2500 AND CURRENT DATE STAMPED IN RATING BOX



CONTROLLED DOCUMENT



MILLIMETER / INCHES OR INCHES / MILLIMETER		PROJECTION	
MILLIMETER		THIRD ANGLE	
Advanced D.C. Motors, Inc. Syracuse, N.Y.			
TRACTION MOTOR			
Scale	Drawn	Date	
D FULL	MM	DC-72-91	
Part No			L91-4003

Zone	Rev	Wks	By	Date
AG	REV TO COM TO DTL FOR 0.064 P.H.	03-25-02		
AF	UPDATED ARMATURE FOR 30A P.H.	07-03-01		
AE	REV TO COM TO DTL FOR 30A P.H.	04-30-01		
AD	REV HEADBAND FOR 2022 EFF	04-28-98		
AC	REWORK IN (A) LAST REV. I.E. EFF	04-28-98		

This print is the property of Advanced D.C. Motors, Inc. and is loaned to you for reference only. It is not to be reproduced or used in any way without the written permission of Advanced D.C. Motors, Inc.

ADVANCED D.C. MOTORS, INC.

COLD PERFORMANCE CHARACTERISTIC
L. TYPE 6.7" DIA DRIVE MOTOR
75 VOLT - .031 FAN COOLED
PERFORMANCE FOR CCW DRIVE ROTATION

